



Here's another thing to add to your list: **being inclusive.**

What does that mean? Good question! Being inclusive is when we make the world feel friendly and safe for everyone.

Shall we take a look?

WHAT IS INCLUSION?

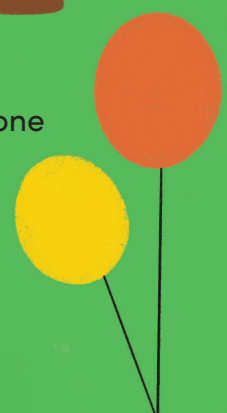
Have you ever changed your game so everyone can play?



Or made sure all your friends received an invitation?
Have you ever asked to hear someone else's story?



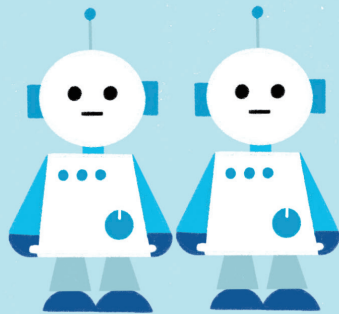
I bet that's because you were **being inclusive**.
When we're inclusive, we do our best to make everyone
feel welcome, no matter who they are. That way,
everyone gets to join in and have fun.



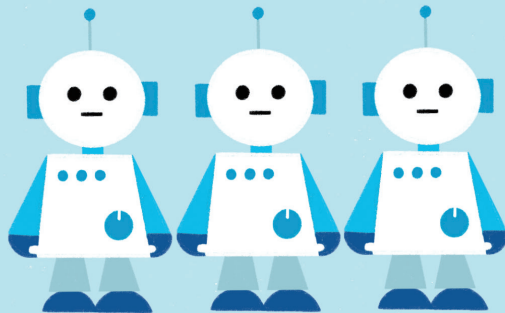
HUMANS ARE ALL DIFFERENT

Imagine a world where everyone looks, dresses, sounds and thinks the same. It sounds a bit like Robot Land.

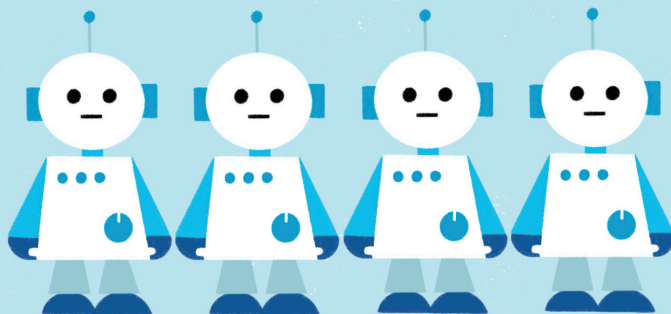
Beep-beep-booooooring!



Luckily, humans aren't robots. We're different in all kinds of ways: age, gender, race, culture, language, ability, strengths, tastes, sock choices ... I bet you can think of other ways we're different too.



Robots might all like the same game and have the same needs. But not us humans. We are way more interesting than that.



We don't always understand each other's differences. But that's okay. We have time to learn.



RIBBIT

HEY

WOOF

CHIRP

BEEP

TOOT!

HI!

HELLO!

BUZZ

AH